



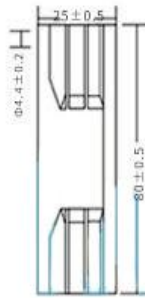
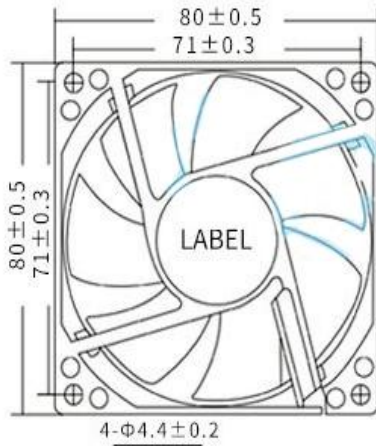
## EC Brushless FAN

AF7E8025B 80\*80\*25mm

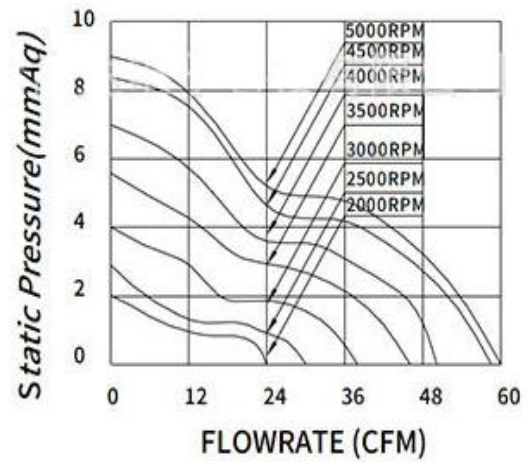
Motor: EC Brushless  
 Bearing: Ball  
 Shell frame: PBT UL94V\_0  
 Fan blade: PBT UL94V\_0  
 Insulation: Class B  
 Wire: AWG#26UL1007 (optional)  
 PIN1: BLACK WIRE----(-)  
 PIN2: RED WIRE----(+)



DIMENSIONS DRAWING(unit:mm)



P@Q CURVE(AT RATED VOLTAGE)



Model	Bearing Mode①	Rated Vol	Freque ncy	Rated current	Rated input power	Speed	Maximum air Flow		Maximum Air pressure		Noise
		VDC	VDC	Amp	Watt		R. P. M	M3/min	CFM	mmH20	
PART. NO.		VDC	VDC	Amp	Watt	R. P. M	M3/min	CFM	mmH20	InH20	dB-A
AF7E8025B220LL	B=Ball S=Sleeve H=Hydraulic	220	80~230	0.01	2.2	2000	0.69	24.4	2	0.08	25.9
AF7E8025B220L		220	80~230	0.01	2.2	2500	0.89	31.4	2.8	0.11	29.1
AF7E8025B220M		220	80~230	0.01	2.2	3000	1.07	37.9	4	0.16	34.2
AF7E8025B220H		220	80~230	0.01	2.2	3500	1.25	44.3	5.3	0.21	36.9
AF7E8025B220HH		220	80~230	0.02	4.4	4000	1.44	50.8	7	0.28	41.8
AF7E8025B220VH		220	80~230	0.02	4.4	4500	1.63	57.6	8.5	0.33	45.4

AF7E8025B220HV	B=Ball S=Sleeve H=Hydraulic	220	80~230	0.03	6.6	5000	1.71	60.5	8.9	0.35	46.3
----------------	-----------------------------------	-----	--------	------	-----	------	------	------	-----	------	------

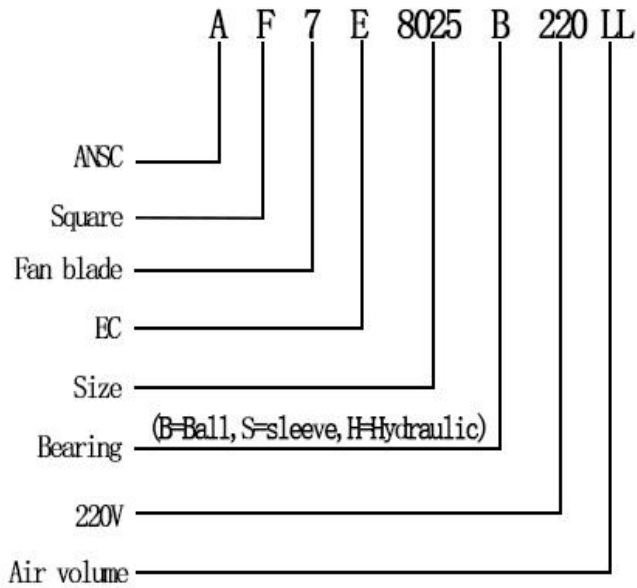
① Bearing Mode: Ball / Sleeve / Hydraulic / Ball (UL) / Sleeve (UL) Hydraulic (UL)

② X=Function: FG RD RDL LD PWM TP VC RC CS RP SS AS CL IPX5

③ A=Plug

④ C=Customized by customers: Air volume, Air duct, Movement, Service life, Temperature, Noise, Material, Mold. etc.

导引: 编码规则 Code Rule



**\*PROPRIETARY AND CONFIDENTIAL , THE INFORMATION CONTAINED IN THIS DRAWING IS THE SOLE PROPERTY OF <ALL NEW SEMI>. ANY REPRODUCTION IN PART OR AS A WHOLE WITHOUT THE WRITTEN PERMISSION OF <ALL NEW SEMI> IS PROHIBITED.**

<https://allnewsemi.com>  
<https://allnewsemi.shop>