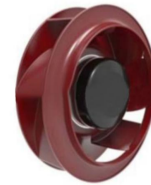




EC Centrifugal FAN

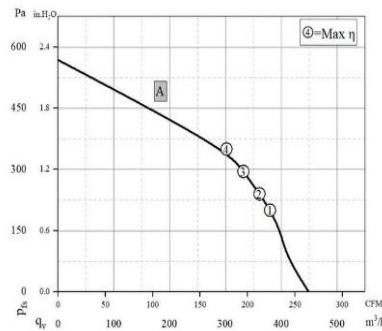
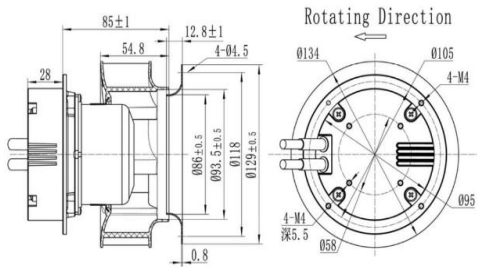
AQL13385B 133*85MM

Motor:EC Centrifugal
 Bearing:Ball
 Shell frame: PBT UL94V-0
 Fan blade: PBT UL94V-0
 Insulation:Class B
 Wire:AWG#26UL1007 (optional)
 PIN1:BLACK WIRE---(-)
 PIN2:RED WIRE---(+)



DIMENSIONS DRAWING(unit:mm)

P@Q CURVE(AT RATEDVOLTAGE)



	P _s (Pa)	Airflow (m³/h)	Speed (rpm)	Power (W)	Noise (dB(A))
A	① 200	380	5230	83	/
	② 240	360	5230	85	/
	③ 295	330	5235	86	/
	④ 350	300	5225	88	/

●距离风机出口1m处测试噪音/Test noise from fan outlet 1 m away

Model	Bearing Mode①	Rated Vol	Frequency	Rated current	Rated input power	Speed	Maximum air Flow		Maximum Air pressure		Noise
							M3/min	CFM	mmH20	InH20	
PART. NO.	B=Ball S=Sleeve H=Hydraulic	VDC	VAC	HZ	Watt	R. P. M					dB-A
AQL13385B10L		10	230	50/60	72	5220	450	/	/	/	/

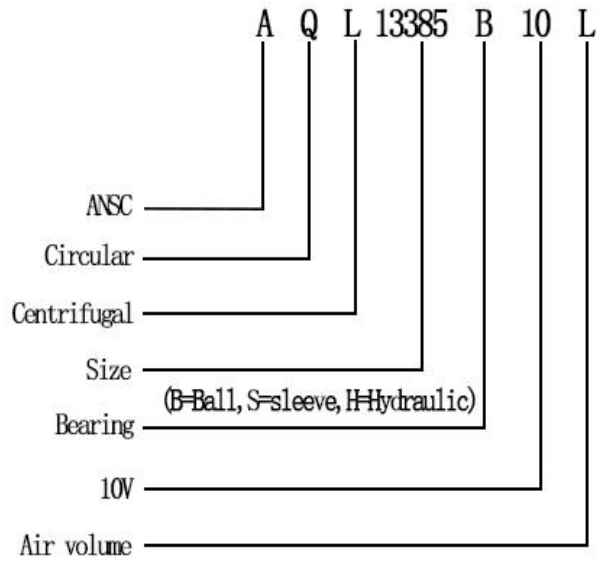
①Bearing Mode:Ball/ Sleeve/Hydraulic/Ball (UL)/Sleeve (UL)Hydraulic (UL)

②X=Function: FG RD RDL LD PWM TP VC RC CS RP SS AS CL IPX5

③A=Plug

④C=Customized by customers: Air volume, Air duct, Movement,Service life, Temperature, Noise, Material, Mold.etc.

导引：编码规则Code Rule



*PROPRIETARY AND CONFIDENTIAL , THE INFORMATION CONTAINED IN THIS DRAWING IS THE SOLE PROPERTY OF <ALL NEW SEMI>.
ANY REPRODUCTION IN PART OR AS A WHOLE WITHOUT THE WRITTEN PERMISSION OF <ALL NEW SEMI> IS PROHIBITED.

<https://allnewsemi.com>
<https://allnewsemi.shop>