

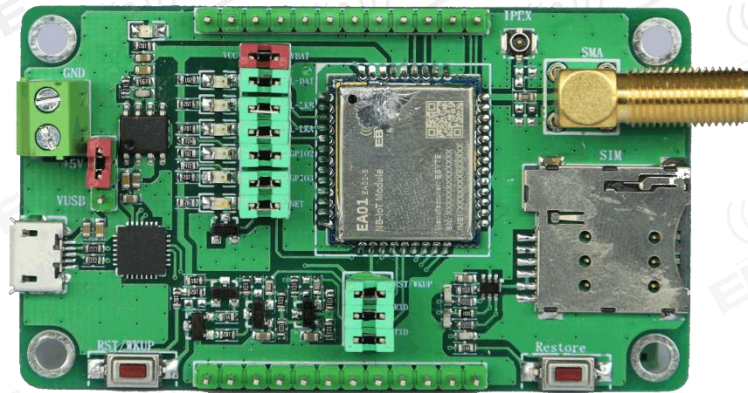


EA01-S-TB Datasheet

NB-IoT Module Test Board

1.Introduction

EA01-S-TB is a test suite based on EA01-S module, with USB interface, it can quickly test the features and functions of EA01-S module, which can greatly reduce the user's development cycle.



1.2 Features

- Support B3 B5 B8 frequency band;
- Support TCP、UDP、MQTT、COAP、LwM2M and other protocols;
- Support Telecom Cloud, Unicom Cloud, China Mobile onenet cloud platform and Ebyte cloud transparent transmission;
- Deep sleep current is less than 1uA, typical value 0.7uA;
- Support 3GPP standards R13, R14;
- Support TCP/UDP transparent transmission;
- Support SMS in PDU format;
- Support FOTA upgrade;
- Support registration package, heartbeat package;
- Support Modbus RTU/TCP conversion;
- Support PSM, eDRX;

1.3 Application

- Smart lighting
- Smart Home
- Smart fire
- Smart meter reading
- Smart parking
- Intelligent monitoring
- Smart buildings
- Automatic data acquisition
- Health sensor
- Vehicle Testing Equipment
- Intelligent robot

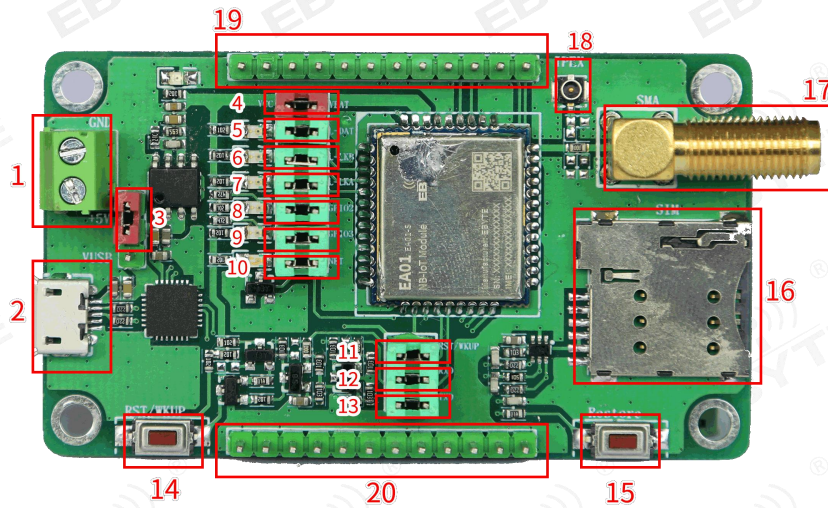
1.4 Electrical parameters

No	Parameter name	Value	Remark
1	Model number	EA01-S	NB Module
2	Module process		USB connector
3	Production process	Lead-free,SMT	
4	Power supply interface	USB power supply or connecting terminal	Terminal power supply 5V
5	Communication interface	USB	
6	Operating temperature	-40~+85°C	Industrial grade
7	Operating humidity	10%~90%	Relative humidity, non-condensing
8	Storage temperature	-40~+125°C	Industrial grade

Note: It is recommended to choose external terminal 5V power supply, but the power supply capacity of USB interface may be insufficient.

2.Quick start

2.1 Pin definition



No	Name	Function
1	+5V	External 5V power supply
2	USB	USB interface
3	VIN	External 5V power supply and USB power supply options
4	VBAT	Module power supply options
5	L-DATA	Data transceiver indicator selection
6	L-LINKB	SocketB link connection indicator selection
7	L-LINA	SocketA link connection indicator selection
8	GPIO2	GPIO2 indicator selection
9	GPIO3	GPIO3 indicator selection
10	NET	Network status indicator selection
11	WKUP/RST	Wake /Reset selection
12	RXD	Serial data receiving options
13	TXD	Serial data transmitting options
14	WKUP/RST	Reset / wake up button
15	Restore	Factory reset button
16	SIM card	SIM card connector
17	SMA	Antenna interface (default)
18	IPEX	Antenna interface (requires jump resistance)
19	I/O	GPIO pin out
20	I/O	GPIO pin out

Note: This test board supports serial port wake up.

2.2 Function test

Special note: Please refer to the corresponding manual for the detailed use of the software and the software functions of the EA01-S module.

About us

Sales hotline: 4000-330-990

Tel: 028-61399028

Support: support@cdebyte.com

Website: www.ebyte.com

Address: BuildingB5,MouldIndustrialPark,199#XiquAve,WestHigh-techZone,Chengdu,611731,Sichuan,China



Chengdu Ebyte Electronic Technology Co.,Ltd.