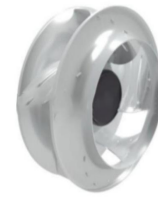




EC Centrifugal FAN

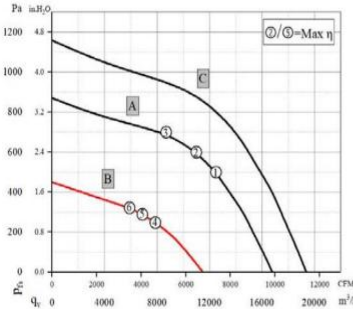
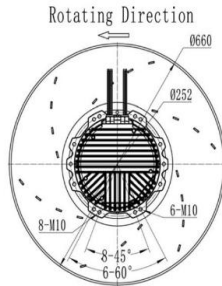
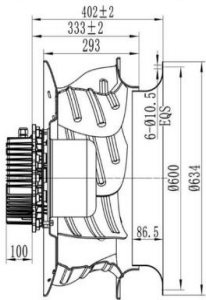
AQL660402B 660*402mm

- Motor: EC Centrifugal
- Bearing: Ball
- Shell frame: Aluminum alloy
- Fan blade: Aluminum alloy
- Insulation: Class B
- Wire: AWG#26UL1007 (optional)
- PIN1: BLACK WIRE----(-)
- PIN2: RED WIRE----(+)



DIMENSIONS DRAWING(unit:mm)

P@Q CURVE(AT RATED VOLTAGE)



	P _a (Pa)	Airflow (m ³ /h)	Speed (rpm)	Power (W)	Noise (dB(A))
A	① 500	12500	1260	3300	79.9
	② 600	11000	1260	3400	80.0
	③ 700	8700	1260	3150	81.2
B	④ 250	7900	860	989	74.8
	⑤ 290	6900	860	955	74.5
	⑥ 320	5900	860	920	75.2

•距电机进口 1m 处测试噪音/Test noise from fan inlet 1 m away

Model	Bearing Mode①	Rated Vol	Frequency	Rated current	Rated input power	Speed	Maximum air Flow		Maximum Air pressure		Noise
PART. NO.		VDC	VAC	HZ	Watt	R. P. M	M3/min	CFM	mmH20	InH20	dB-A
AQL660402B3.6L	B=Ball S=Sleeve H=Hydraulic	3.6	3~380	50/60	940	860	1150	/	/	/	77.8
AQL660402B10L		10	3~380	50/60	2350	1260	17000	/	/	/	83.4
AQL660402B10M		10	3~380	50/60	3610	1500	19380	/	/	/	87.2

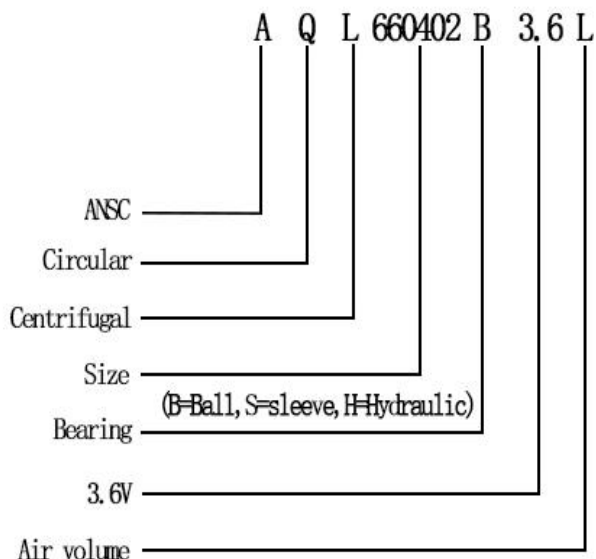
①Bearing Mode: Ball / Sleeve / Hydraulic / Ball (UL) / Sleeve (UL) Hydraulic (UL)

②X=Function: FG RD RDL LD PWM TP VC RC CS RP SS AS CL IPX5

③A=Plug

④C=Customized by customers: Air volume, Air duct, Movement, Service life, Temperature, Noise, Material, Mold. etc.

导引： 编码规则Code Rule



*PROPRIETARY AND CONFIDENTIAL , THE INFORMATION CONTAINED IN THIS DRAWING IS THE SOLE PROPERTY OF <ALL NEW SEMI>.
ANY REPRODUCTION IN PART OR AS A WHOLE WITHOUT THE WRITTEN PERMISSION OF <ALL NEW SEMI> IS PROHIBITED.

<https://allnewsemi.com>
<https://allnewsemi.shop>