



Chengdu Ebyte Electronic Technology Co.,Ltd

# Wireless Modem

## User Manual



**EBT3001**

All rights to interpret and modify this manual belong to  
Chengdu Ebyte Electronic Technology Co., Ltd.

catalogue

1. Introduction .....	3
2. Size and pin definition .....	4
2.1 Package size .....	4
2.2 Pin Definition .....	4
3. Introduction .....	7
3.1 Series Products .....	7
3.2 Technical parameters .....	8
3.3 Default parameters .....	9
3.4 Hardware design .....	10
3.4.1 Minimum System Reference Circuit .....	10
3.4.2 Network port with transformer reference circuit .....	11
3.4.3 Network port without transformer reference circuit .....	12
4. Product Function .....	13
4.1 Introduction to basic functions .....	13
4.1.1 Web page configuration .....	13
4.1.2 Subnet mask/IP address .....	14
4.1.3 Domain Name Resolution (DNS) .....	15
4.1.4 Restore factory settings .....	15
4.2 Socket function .....	15
4.2.1 TCP server mode .....	15
4.2.2 TCP Client Mode .....	16
4.2.3 UDP Server Mode .....	16
4.2.4 UDP Client Mode .....	16
4.2.5 HTTP Client Mode .....	16
4.2.6 MQTT Client mode .....	18
4.3 Advanced Features .....	21
4.3.1 Random native port .....	21
4.3.2 Heartbeat Packet Function .....	21
4.3.3 Registration package function .....	22
4.3.4 Short connection function .....	22
4.3.5 Timeout restart function .....	22
4.3.6 Cache cleaning function .....	22
4.3.7 Network disconnection and reconnection .....	23
4.3.8 Remote upgrade .....	23
4.4 Modbus Gateway .....	24
4.4.1 Modbus RTU and Modbus TCP protocol conversion .....	24
4.4.2 Simple Protocol Conversion Mode .....	25
4.4.3 Multi-host mode .....	25
4.4.4 Storage Gateway .....	26
4.4.5 Configurable Gateway .....	26
4.4.6 Automatic upload .....	27

5. Configuration Mode .....	29
5.1 Web Settings .....	29
5.2 Configuration tool software settings .....	29
5.3 AT command configuration .....	29
Revise history .....	30
About us .....	30

# 1. Introduction

EBT3001 is a serial port chip that realizes serial port data  $\rightleftharpoons$  Ethernet data conversion; it has a variety of Modbus gateway modes and MQTT/HTTP IoT gateway modes, which can meet the networking functions of various serial port devices /PLC.

## Features

- Support multiple working modes ( TCP Server , TCP Client , UDP Server , UDP Client );
- Support web page setting, configuration tool setting, AT command setting parameters;
- Support multiple socket connections;
- Support multiple checksums ( None , Odd , Even , Mark , Space );
- Support DHCP function;
- Support DNS function, domain name resolution;
- DNS server address customization;
- Support a variety of Modbus gateways (simple protocol conversion, multi-host mode, storage gateway, configurable gateway);
- Supports quick access to Alibaba Cloud, Baidu Cloud, OneNET , Huawei Cloud, and standard MQTT servers of version 3.1 ;
- Support HTTP protocol ( GET/POST request);
- Support virtual serial port;
- Support timeout restart function, restart time customization;
- Support short connection function, short connection interval time customization;
- Support heartbeat package and registration package functions;
- Support cache cleaning function;
- Support access to external network and local area network;
- Independently design test suites, which are convenient for users to debug and use;
- Support online upgrade function.



No.	Pin.	Function	Describe
0	GND	power supply	Common ground terminal, voltage 0V reference point, power supply negative terminal input ;
1	VDCID	power supply	The power input of the internal digital circuit LDO regulator needs an external decoupling capacitor. 2.2uF is recommended , not less than 0.1uF is recommended ;
2	VSW	power supply	The internal DC-DC switch output must be connected to the VDCID with a 22uH inductor in series close to the pin ;
3	VIO33/VBAT	power supply	For I/O and DC-DC or battery power input, external decoupling capacitors are required close to the pins. 2.2uF is recommended , not less than 0.1uF is recommended ;
7	LINKLED	I/O/A	The network cable is inserted into the indicator terminal, connected to output low level, and unconnected to output high level;
8	SPDLED	I/O/A	Network status data transmission indicator;
11	RX_P	I/O/A	Ethernet receives RX+ signal end;
12	RX_Women	I/O/A	Ethernet receives RX -signal end;
13	TX_P	I/O/A	Ethernet sends TX+ signal terminal;
14	TX_WOMEN	I/O/A	Ethernet sends TX -signal terminal;
17	TXD0	I/O/A	Serial port sending data terminal, TTL level communication voltage only supports 3.3V , if it is connected to 5V , level conversion is required;
18	RTS	I/O/A	MODEM output signal of serial data , request to send;
20	RXD0	I/O/A	The serial port receives data, the TTL level communication voltage only supports 3.3V , if it is connected to 5V , it needs level conversion;
21	485_EN	I/O/A	RS485 software enables the control terminal, when the serial port sends data, it is a high-level output, and the default is a low-level output;
24	CTS	I/O/A	MODEM input signal terminal of serial data , clear to send;
25	nRST	I/O/A	External reset input, internal weak pull-up, active low level above 100 nanoseconds;
27	LED2	I/O/A	The network port link indicator terminal, the default output is high level, the output is low level after the connection is successful under the TCP protocol, and the default output is low level under the UDP protocol;
28	LED1	I/O/A	Running indication terminal, after the module is powered on and initialized, this pin outputs a 5Hz

			square wave;
31	X32MO	I/A	The inverting output terminal of the frequency oscillator HSE is connected to one end of a 32MHz crystal;
32	X32MI	A	The input end of the high frequency oscillator HSE , the other end of the external 32MHz crystal;
33	WON	power supply	The power node of the internal analog circuit needs to be close to the pin and connect an external 2.2uF decoupling capacitor;
35	VDC	power supply	The power input of the internal analog circuit LDO regulator needs an external decoupling capacitor. It is recommended to be no less than 0.1uF , and it is recommended to connect VDCID through magnetic beads or directly ;
36	IO_RST	I/O/A	Restore the factory end, the internal weak pull-up, can be connected to the external reset button, the low level lasts for about 5s effective;
43	TXD_LED	I/O/A	Serial port sending indication terminal, the default output is high level, when there is data output, it outputs low level, and when there is continuous data, it outputs a square wave signal with a period of 80ms and a low level of 20ms ;
44	RXD_LED	I/O/A	Serial port receiving indication terminal, the default output is high level, when there is data input, it outputs low level, and when there is continuous data, it outputs a square wave signal with a period of 80ms and a low level of 20ms ;
4~6, 9~10, 15~16, 19, 22~23 26,29~30,34, 37~42, 48~48	RESERVED	--	Keep it floating;

## 3. Introduction

### 3.1 Series Products

PN	Type	Socket	Operating mode	Operating Voltage	Product Size (mm)
NS1	SMD module	6 way	TCP Sever	3.0~5.5V(DC)	17*19*4
NT1	In-line module	6 way	TCP Client	3.0~5.5V(DC)	35*22*30
NT1-B	In-line module	6 way	UDP Sever	3.0~5.5V(DC)	35*22*20
NA111	DTU	6 way	UDP Client	8~28V(DC)	92*66*30
NA111-A			MQTT Client	85 ~265V(AC)	
EBT3001	chip	6 way	HTTP Client	2.1V ~3.6V (DC )	5*5



## 3.2 Technical parameters

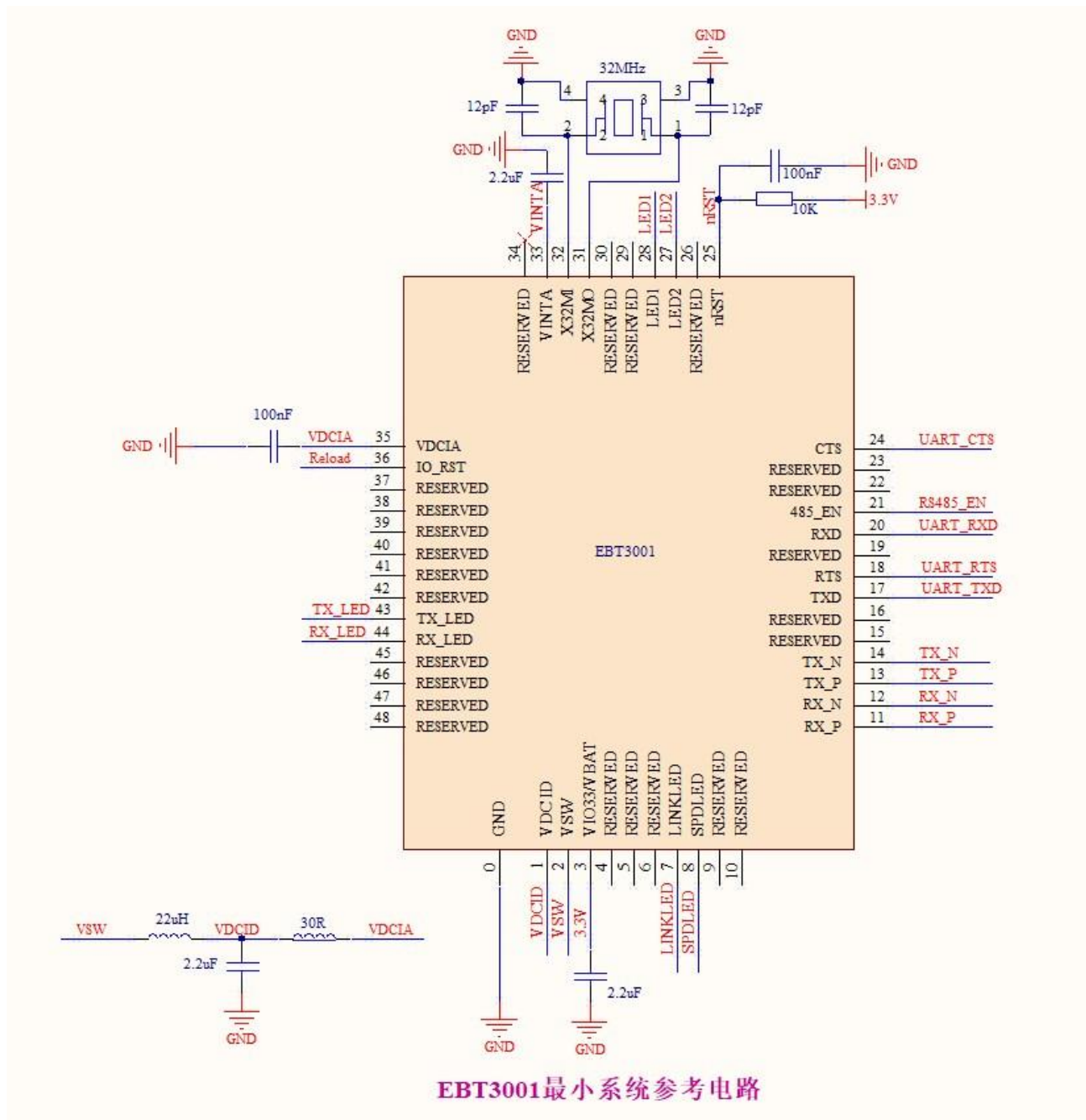
Name	Description
Operating Voltage	2.1V ~3.6V (DC )
Serial level	TTL level ( 3.3V )
Operating mode	TCP Server、TCP Client、UDP Server、UDP Client、HTTP Client、MQTT Client ( 默认 TCP Server )
Socket connection	Support 6 -way client connection (TCP server mode )
Network protocol	IP、TCP/UDP、IPv4
How to get IP	DHCP , static IP (default static IP )
DNS	support
Configuration method	Web , configuration tool, AT command
IP address	Customizable (default 192.168.3.7 )
Local port	Customizable (default 8887 )
Subnet mask	255.255.255.0
Gateway	Customizable (default 192.168.3.1 )
Target IP	Customizable (default 192.168.3.3 )
Destination port	Customizable (default 8888 )
Web cache	512 Byte
Serial port cache	512 Byte
Packaging mechanism	512 Byte
Serial port baud rate	1200 ~ 230400 bps (default 115200 )
Data bits	5 , 6 , 7 , 8 (default 8 )
Stop bit	1 , 2 (default 1 )
Check Digit	None , Odd , Even , Mark , Space (default None )
Flow Control	RTS/CTS、DSR/DTR、XON/XOFF、NONE (default NONE )
Working temperature and humidity	-40 ~ +85 °C, 5% ~ 95%RH (non-condensing)
Storage temperature and humidity	-40 ~ +105 °C, 5% ~ 95%RH (non-condensing)

### 3.3 Default parameters

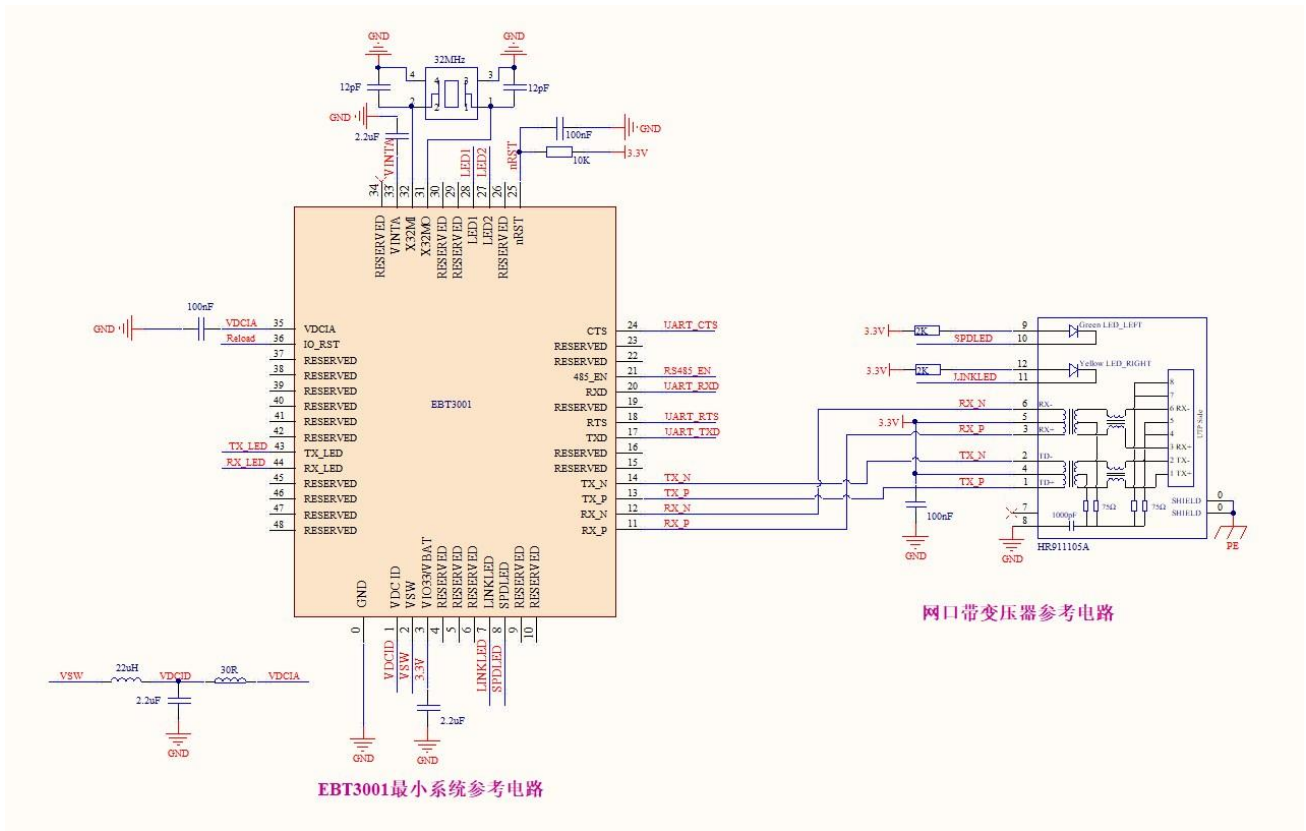
Project	Default parameters
IP address	192.168.3.7
Default local port	8887
subnet mask	255.255.255.0
default gateway	192.168.3.1
Default working mode	TCP Server
Default destination IP	192.168.3.3
Default destination port	8888
Serial port baud rate	115200
Serial port parameters	None / 8 / 1

### 3.4 Hardware design

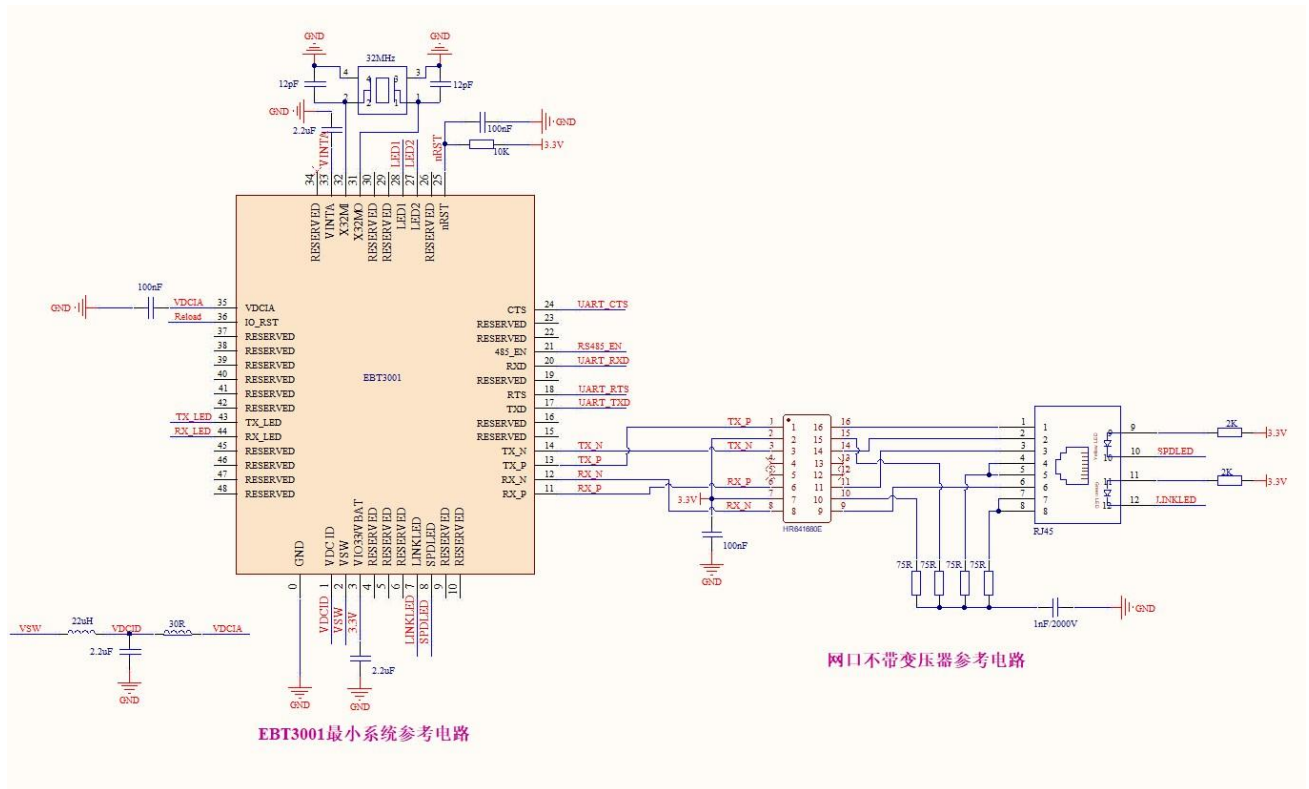
#### 3.4.1 Minimum System Reference Circuit



### 3.4.2 Network port with transformer reference circuit



### 3.4.3 Network port without transformer reference circuit



## 4. Product Function

### 4.1 Introduction to basic functions

#### 4.1.1 Web page configuration

The device has a built-in web server, which is convenient for users to set and query parameters through web pages.

The port of the web server can be customized (2-65535), default: 80

Operation method (Microsoft Edge version 94.0.992.50 is an example, it is recommended to use Google kernel browser, IE kernel browser is not supported):

Step 1: Open the browser, enter the IP address of the device in the address bar, for example 192.168.3.7 (the IP address and the computer need to keep the same network segment), if you forget the IP of the machine, you can query it through AT commands and configuration software



ebyte

Device info			
Device model	Serial number	00001	语言 English
Version	Device name	A0001	webserver password *****
Network parameter			
DHCP	Work mode	TCP server	MAC 84-C2-E4-36-06-B6
Local IP	Local port	8887	Web port 80
MASK	Getway	192.168.3.1	DNS 114.114.114.114
Target IP	Target port	8888	
Serial parameter			
Baud rate	Data bit	8	Parity NONE
Stop bit	Flow	NONE	
MODBUS parameter			
MODBUS TCP to RTU	Mosbus instructions	<input type="text"/> <input type="button" value="add"/> <input type="button" value="clear"/>	
Modbus mode	MODBUS Query time	500	spare space 49
Modbus timeout	Modbus keep time	10	01 03 00 00 00 0A <input type="button" value="X"/>
<small>Instruction format: "XX XX XX XX XX XX"; "XX" is a 2-digit hexadecimal number. Must add a space between "XX" and "XX" Up to 50 instructions can be configured</small>			
Advanced			
Outage restart time	Reconnection times	5	Nodata reboot 300
Heartbit cycle	Short connection	0	NET connected clear cache Enable
Heartbit mode	Custom heartbeat	keepalive message	<input type="checkbox"/> Hex
Registration mode	Custom registration	register message	<input type="checkbox"/> Hex
<input type="button" value="submit"/>			

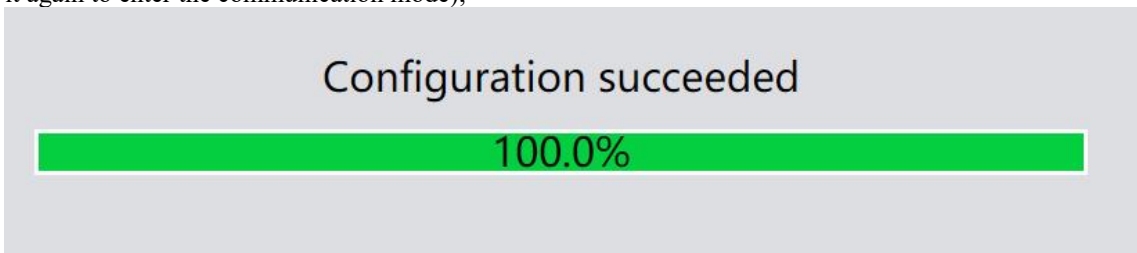
Step 2: The webpage pops up the main interface, and you can query and set relevant parameters;

Step 3: Click Submit to save the configuration parameters after entering the correct key. The factory default key is:

123456;

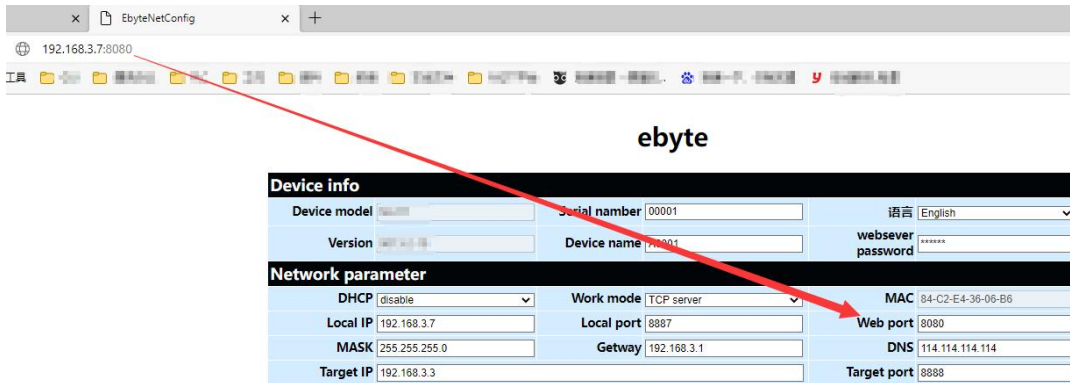


Step 4: The progress bar indicates the configuration progress. Do not refresh the web page again after the configuration is completed (refresh the web page to enter the configuration mode again, you can restart the device or submit it again to enter the communication mode);



It can also be opened through the Open Web Configuration button of the configuration software.

[Note] If the port number is modified, the port number should be added to the address input field. For example, if you modify the web page access port to 8080, you need to enter 192.168.3.7:8080 in the address bar to connect to the web page configuration.



#### 4.1.2 Subnet mask/IP address

The IP address is the identification of the module in the local area network and is unique in the local area network. Therefore, it cannot be duplicated with other devices on the same local area network. There are two ways to obtain the IP address of the module, static IP and DHCP.

(1) Static IP: Static IP needs to be set manually by the user. In the process of setting, pay attention to writing IP, subnet mask and gateway at the same time. Static IP is suitable for scenarios where IP and device statistics are required and one-to-one correspondence is required.

Advantages: Access to devices that cannot be assigned IP addresses can be searched through the broadcast mode of the entire network segment, which is convenient for unified management;

Disadvantages: Different network segments in different LANs, resulting in normal TCP/UDP communication.

(2) Dynamic DHCP: The main function of DHCP is to dynamically obtain the IP address, gateway address, DNS server address and other information from the gateway host, thereby eliminating the tedious steps of setting the IP address. It is suitable for scenarios where there is no requirement for IP, and there is no mandatory one-to-one correspondence between IP and modules.

Advantages: devices with DHCP Server such as access routers can communicate directly, reducing the trouble of setting IP address gateway and subnet mask.

Disadvantage: Connecting to a network without DHCP Server, such as direct connection with a computer, the module will not work properly. The subnet mask is mainly used to determine the network number and host number of the IP address, to indicate the number of subnets, and to determine whether the module is in the subnet. The subnet mask must be set. Our commonly used class C subnet mask: 255.255.255.0, the network number is the first 24 bits, the host number is the last 8 bits, the number of subnets is 255, and the module IP is in the range of 255 within this subnet, the module IP is considered to be in this subnet. Gateway refers to the network number of the network where the current IP address of the module is located. If a device such as a router is connected to the external network, the gateway is the router

### 4.1.3 Domain Name Resolution (DNS)

Domain name resolution translates domain names into network-recognized IP addresses through Domain Name Resolution (DNS) servers. The domain name resolution (DNS) server address of the serial port server supports user definition, and can realize domain name resolution through a custom domain name resolution server in the event of an abnormal domain name server. The device will report the resolution to the custom domain name resolution (DNS) server during domain name resolution. Request, return the device connection parameters (usually the IP address) after the parsing is completed.

In DHCP mode, the domain name resolution (DNS) server address is automatically obtained (synchronized with the router's domain name resolution address) and cannot be modified.

In static IP mode, the factory default address of the Domain Name Resolution (DNS) server is 114.114.114.114.

### 4.1.4 Restore factory settings

Press and hold the Reload pin of the device until the LED indicator lights up to release the key.

## 4.2 Socket function

### 4.2.1 TCP server mode

TCP Server is the TCP server. In TCP Server mode, the device listens to the local port, accepts the client's connection request and establishes a connection for data communication. When the Modbus gateway function is turned off, the device sends the data received by the serial port to all client devices that establish connections with the device, and supports connecting up to 6 clients. After the Modbus gateway function is enabled, the non-Modbus data will be cleared and not forwarded.

Typically used for communication with TCP clients within a local area network.



## 4.2.2 TCP Client Mode

TCP Client is the TCP client. When the device is working, it will actively initiate a connection request to the server and establish a connection to realize the interaction between serial port data and server data.

To use the client, you need to configure the target IP address/domain name and target port accurately.

## 4.2.3 UDP Server Mode

UDP Server means that the device does not verify the IP address of the data source when communicating with the UDP protocol. After receiving a UDP data packet, it saves the source IP address and source port of the data packet, and sets it as the destination IP and port, so The data sent by the device only sends data packets to the source IP address and port where the device received data last time .

This mode is usually used in scenarios where multiple network devices communicate with this device, and the frequency is high, and the TCP Server cannot meet the conditions.

Using UDP Server requires the remote UDP device to send data first, otherwise the data cannot be sent normally.

[Note] In UDP mode, the data sent by the network to the device should be less than 512Bit per packet, otherwise it will cause data loss

## 4.2.4 UDP Client Mode

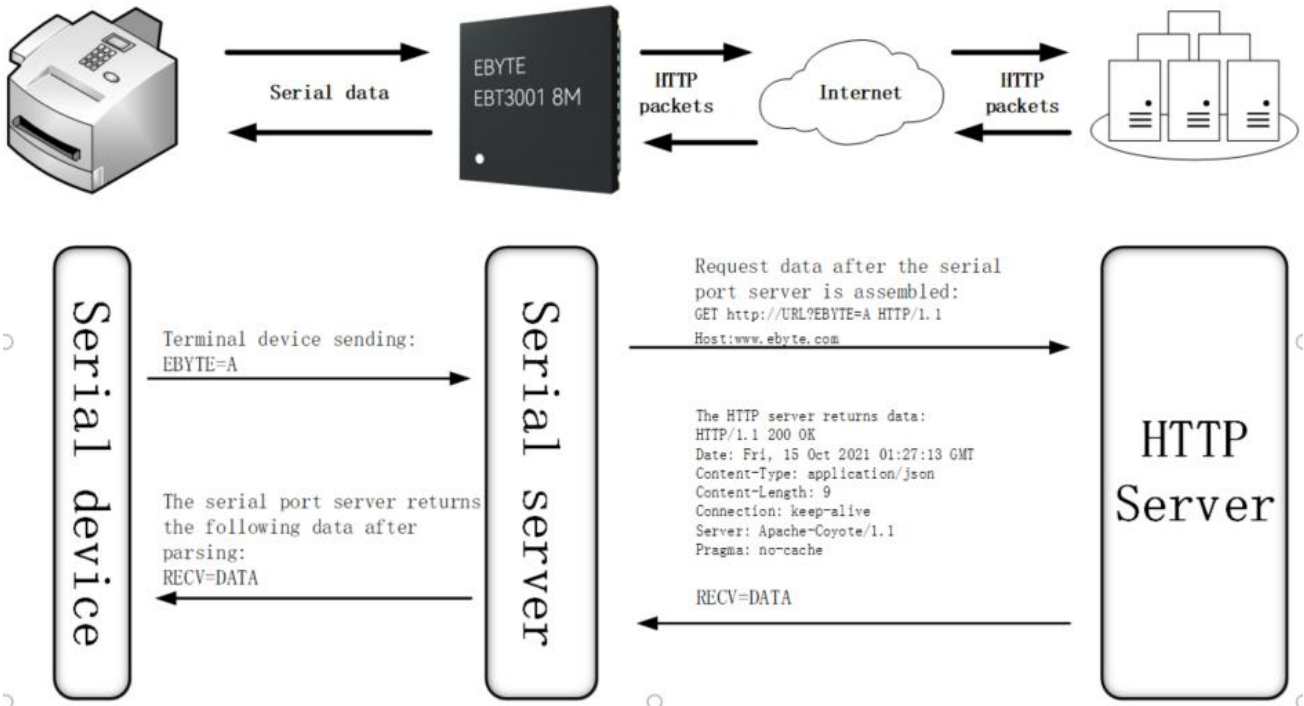
UDP Client is a connectionless transmission protocol that provides transaction-oriented simple and unreliable information transmission services. There is no connection establishment and disconnection, and data can be sent to the other party only by configuring the destination IP and destination port. It is usually used in data transmission scenarios where there is no requirement for the packet loss rate, the data packets are small and the transmission frequency is fast, and the data is to be transmitted to the specified IP.

In UDP Client mode, the device will only communicate with the configured (target IP and target port) remote UDP devices.

In this mode, the target address is set to 255.255.255.255, and the sent data will be broadcast on the entire network segment, but the transceiver device needs to ensure that the ports are consistent, and the device can also receive broadcast data.

## 4.2.5 HTTP Client Mode

This mode can realize the function of HTTP grouping. It provides two modes: GET and POST. Customers can configure URL, Header and other parameters by themselves, and the device (serial port server) will send packets to realize fast communication between the serial port device and the HTTP server. In HTTP client mode, it is recommended to use random ports and enable short connections to save HTTP server resources.



Configure the local network parameters and the HTTP server address and port(You are advised to enable DHCP and random ports), As shown in the figure below(Above is the upper computer, below is the web page):

Network parameters			
Device name	A0001	Serial Number	00001
DHCP	Enable	Local port	0
Local IP	192.168.4.162	DNS	192.168.4.1
Mask	255.255.255.0	Web server port	80
Getway	192.168.4.1	Network mode	HTTP client
Remote IP	HTTP Server	Remote port	HTTP Port

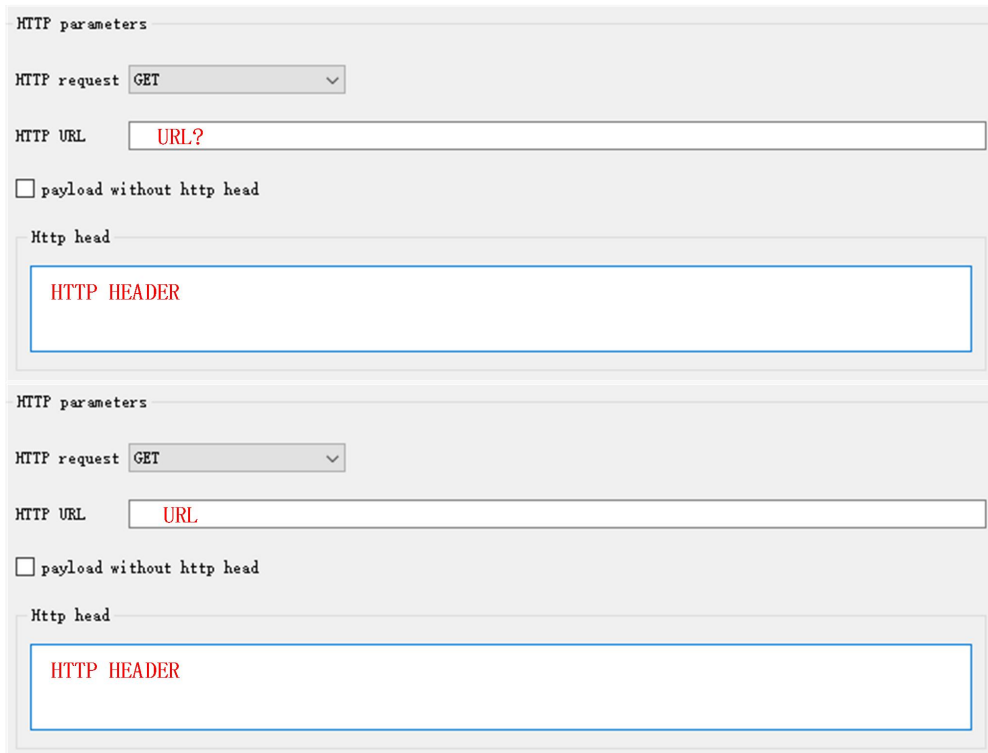
  

Network parameter			
DHCP	enable	Work mode	HTTP client
Local IP	192.168.4.162	Local port	0
MASK	255.255.255.0	Getway	192.168.4.1
Target IP	HTTP Server	Target port	HTTP Port
		MAC	84-C2-E4-36-06-B6
		Web port	80
		DNS	192.168.4.1

Return standard HTTP frame data (left image) and only valid data (right image):

<input type="checkbox"/> payload without http head	<input checked="" type="checkbox"/> payload without http head
<input type="checkbox"/> without http head	<input checked="" type="checkbox"/> without http head

Parameter configuration description as shown in the figure (GET on, POST is under):



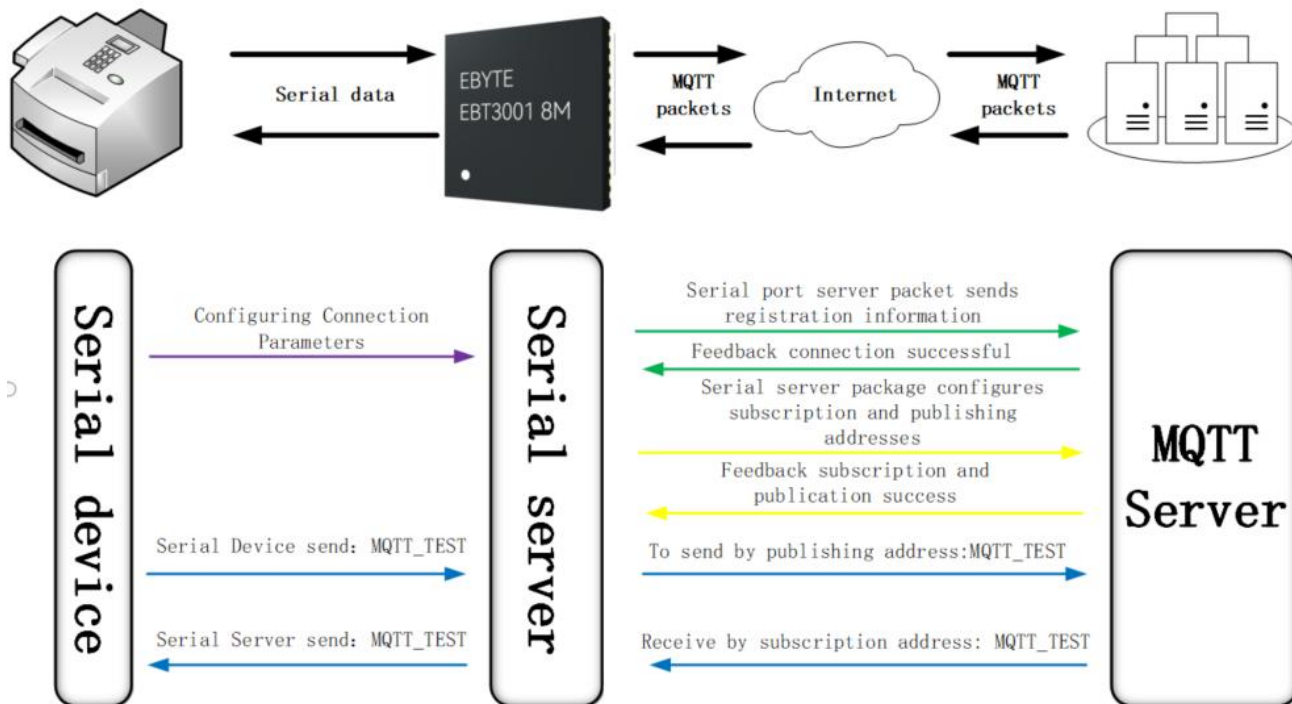
The figure displays two identical screenshots of an HTTP parameter configuration interface. Each interface is titled "HTTP parameters" and contains the following elements:

- HTTP request:** A dropdown menu currently showing "GET".
- HTTP URL:** A text input field containing "URL?".
- payload without http head:** An unchecked checkbox.
- Http head:** A text input field containing "HTTP HEADER".

The bottom screenshot is identical to the top one, but the "HTTP URL" field contains "URL" instead of "URL?".

#### 4.2.6 MQTT Client mode

The serial port server supports quick access to standard MQTT3.1.1 protocol servers (OneNET, Baidu Cloud, Huawei Cloud, user-built and other server types) and Alibaba Cloud servers, supports service quality level configuration (QoS 0, QoS 1), and supports super long text Configuration, convenient and better access to network service operators (server address, three elements, subscription and publishing addresses support up to 128 characters of configuration).



To use MQTT function, advanced Settings such as short links should be turned off as shown in the figure below (upper computer and webpage configuration as shown below) :

**Advanced**

Reconnection time: 5s      Reconnect count: 5freq      Empty cache when connected: Enable

No data autoboot time: 300s       No data autoboot

Short connection time: 0s       Short connection

keepalive mode: Disable      Keepalive cycle: 0s

Keepalive content: keepalive message       HEX

Registration mode: Disable

Custom registration: register message       HEX

---

**Advanced**

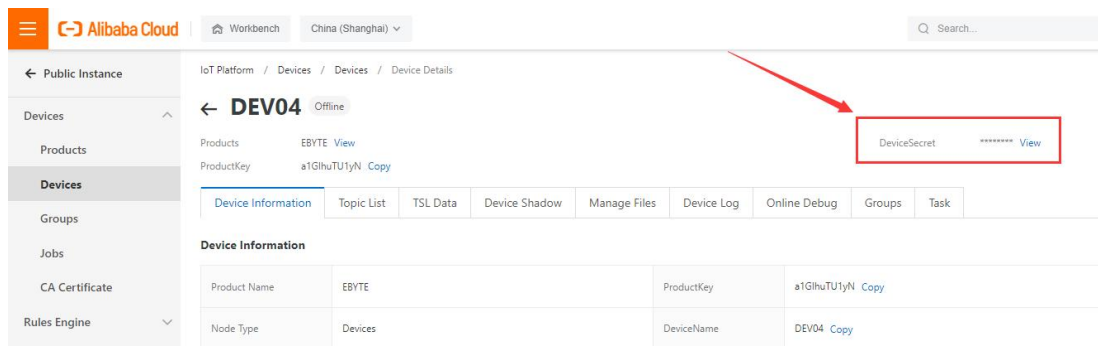
<b>Outage restart time</b> 5      Off:0;Range:1-255s	<b>Reconnection times</b> 5      Range:1-60	<b>Nodata reboot</b> 300      Off:0;Range:60-65535s
<b>Heartbit cycle</b> 0      Off:0;Range:1-65535s	<b>Short connection</b> 0      Off:0;Range:2-255s	<b>NET connected clear cache</b> Enable
<b>Heartbit mode</b> Network	<b>Custom heartbeat</b> keepalive message <input type="checkbox"/> Hex	
<b>Registration mode</b> Disable	<b>Custom registration</b> register message <input type="checkbox"/> Hex	

- 1) standard MQTT3.1.1 and Baidu Cloud and Huawei Cloud and OneNET(Left: software, right: web page)

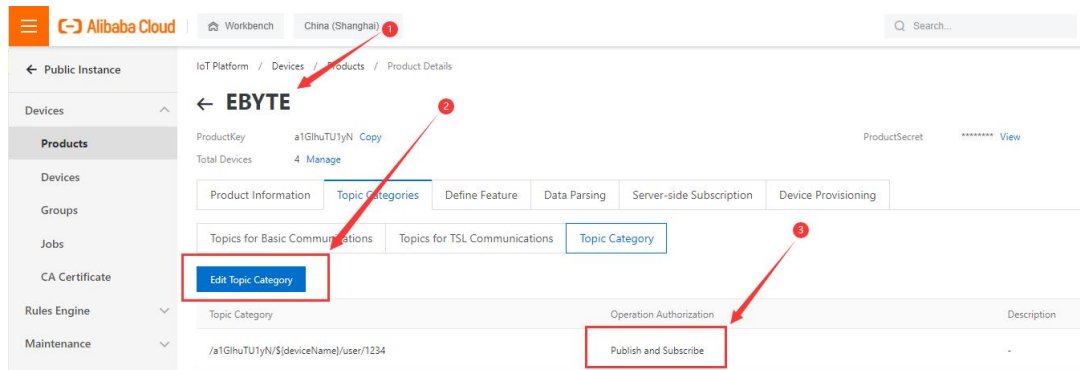
<b>Network parameters</b> Device name: E0001    Serial Number: 00001 DHCP: Enable    Local port: 8886 Local IP: 192.168.4.101    DNS: 114.114.114.114 Mask: 255.255.255.0    Web server port: 80 Gateway: 192.168.4.1    Network mode: MQTT client Remote IP: MQTT Server    Remote port: MQTT Port		<b>Network parameter</b> DHCP: enable    Work mode: MQTT client    MAC: 84-C2-E4-36-00-73 Local IP: 192.168.4.101    Local port: 0    Web port: 80 MASK: 255.255.255.0    Gateway: 192.168.4.1    DNS: 114.114.114.114 Target IP: MQTT Server    Target port: MQTT Port	
<b>MQTT parameters</b> MQTT server: typical MQTT 3.1.1    Keepalive cycle: 60s Client ID:    user name (Device name): User Name Password (Device secret): Password ProductKey:    Subscribe topic: SUB-TOPIC    Qos: 0 Publish topic: PUB-TOPIC    Qos: 0		<b>MQTT client parameter</b> MQTT server: Standard 3.1.1    keepAlive: 60    Range: 1-255 s Device name (Client ID): Client ID user name (Device name): User Name password (Device secret): Password ProductKey:    Publish topic: SUB-TOPIC    Qos: 0 Subscribe topic: PUB-TOPIC    Qos: 0	

## 2) Alibaba Cloud

Alibaba Cloud Supports the use of Alibaba Cloud's "Three Elements" to directly connect to the server to obtain the "Three Elements" required to connect to Alibaba Cloud, as shown in the figure(The following parameters are only examples):



To configure a topic for communication testing:



Select the corresponding product, go to "Custom Topic" under the Topic class list (for details, please refer to the Alibaba Cloud documentation), click "Define Topic Class", set the name to 1234, and grant publish and subscribe permissions (for data return pass).

Configure the device connection parameters, as shown in the following figure:

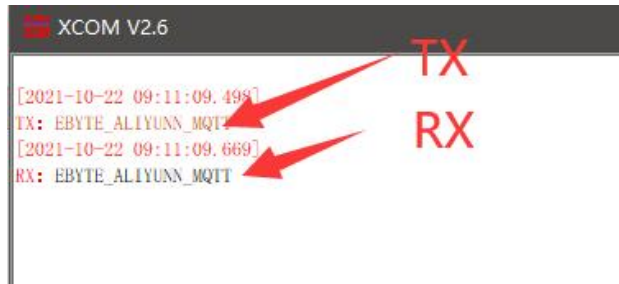
```
{
  "ProductKey": "a1G1huTU1yN",
  "DeviceName": "DEV04",
  "DeviceSecret": "xxxxxxxxxxxxxxxxxxxxxxxxxxxxxxxx"
}
```

Alibaba Cloud server address: ProductKey.iot-as-mqtt.cn-shanghai.aliyuncs.com:1883

Topic for subscription and publication: /a1G1huTU1yN/DEV04/user/1234

Network parameters		Network parameter					
Device name	E0001	DHCP	enable	Work mode	MQTT client	MAC	84-C2-E4-36-00-73
Serial Number	00001	Local IP	192.168.4.101	Local port	0	Web port	80
DHCP	Enable	Mask	255.255.255.0	Getway	192.168.4.1	DNS	114.114.114.114
Local IP	192.168.4.101	Web server port	80	Target IP	ProductKey.iot-as-mqtt.cn-shanghai.aliyuncs.com	Target port	1883
Mask	255.255.255.0	Network mode	MQTT client				
Getway	192.168.4.1	Remote port	1883				
Remote IP	ProductKey.iot-as-mqtt.cn-shanghai.aliyuncs.com						
MQTT parameters		MQTT client parameter					
MQTT server	Alibaba cloud	MQTT server	Ali	keepAlive	60	Range:	1-255 s
Client ID	DeviceName	Device name (Client ID)	DeviceName				
user name (Device name)	DeviceName	user name (Device name)	DeviceName				
Password (Device secret)	DeviceSecret	password (Device secret)	DeviceSecret				
ProductKey	ProductKey	ProductKey	ProductKey				
Subscribe topic	SUB-TOPIC	Publish topic	PUB-TOPIC	Qos	0		
Publish topic	PUB-TOPIC	Subscribe topic	SUB-TOPIC	Qos	0		

Alibaba Cloud MQTT platform communication test:



### 4.3 Advanced Features

#### 4.3.1 Random native port

TCP client, UDP client, HTTP client, MQTT client can configure the local port to 0 (use random local port), and server mode cannot use random port, otherwise the client cannot establish a connection correctly.

Using a random port connection can quickly re-establish the connection when the device disconnects the server unexpectedly, preventing the server from rejecting the connection due to four waves of incompleteness. It is recommended to use a random port in client mode .

The device will automatically enable random ports when configuring the TCP client, HTTP client, and MQTT client modes.

#### 4.3.2 Heartbeat Packet Function

In client mode, users can choose to send heartbeat packets and set the time of heartbeat packets by themselves. The heartbeat packet can be selected in two modes: network heartbeat packet and serial port heartbeat packet. It supports hexadecimal and ASCII transmission. This heartbeat packet is not MQTT heartbeat and needs to be turned off in MQTT client mode. MQTT heartbeat only needs to configure KeepAlive in "MQTT function settings" Time, it is recommended not to configure less than 60s, for example, 120s is recommended in the Alibaba Cloud manual.

Heartbeat packet sending mode:

- (1) The default is to turn off the heartbeat packet mode.
- (2) Serial port mode -> The device sends heartbeat content to the serial bus according to the set heartbeat interval.
- (3) Network port mode -> The device sends heartbeat content to the network port bus according to the set heartbeat interval.

Customize heartbeat packet content (maximum support 40 bytes (ASCII) data, 20 bytes (HEX) data)

Customize the interval for sending heartbeat packets. When it is set to 0, the heartbeat packet function is turned off. If the setting value is greater than zero, the heartbeat packet function is turned on. When it is turned on, the range can be set: (1-65536) seconds.

#### 4.3.3 Registration package function

In the client mode, the user can choose to send the registration package, and set the registration package time by definition.

The registration package supports the following modes:

- (1) The MAC address (OLMAC) is sent when the network establishes a connection with the device.
- (2) The data of the custom registration package sent when the network establishes a connection with the device (OLCSTM).
- (3) After the network and the device are connected, each packet of data sent by the device to the network is preceded by a MAC address (EMBMAC).
- (4) After the network and the device are connected, each packet of data sent by the device to the network is prepended with custom registration packet data (EMBCSTM).

Custom registration package content (maximum support 40 bytes (ASCII) data, 20 bytes (HEX) data).

#### 4.3.4 Short connection function

In client mode, short network connection is supported (this function is disabled by default). TCP short connection is mainly used to save server resource overhead, and is generally used in multi-point (multi-client)-to-point (server) scenarios.

In client mode, short network connection is supported (this function is disabled by default). TCP short connection is mainly used to save server resource overhead, and is generally used in multi-point (multi-client)-to-point (server) scenarios.

When the short link hold time is set to 0, the short link function is turned off. When the setting range is (2-255) seconds, the short connection function is enabled, and the default hold time is 0 seconds (disabled).

#### 4.3.5 Timeout restart function

Supports the timeout restart function (default: 300 seconds), which is mainly used to ensure the long-term stable operation of the device. If data is not sent and received within the set timeout restart time, the device will restart to avoid the impact of abnormal conditions on communication.

The parameter range of timeout restart time is (60-65535) seconds. If it is set to 0, it means shutdown timeout restart. The default is 300 seconds.

#### 4.3.6 Cache cleaning function

The device is in the client mode. When the TCP connection is not established, the data received by the serial port will be placed in the buffer area. The serial port receiving buffer is 1024 bytes, and the data larger than 1024 bytes will cover the

earliest received data. After the network connection is successful, you can Select to clear the serial port cache or send the cache through the network through configuration.

Enable: The device does not save the data received by the serial port before the connection is established.

Disabled: After the connection is established, the network will receive the serial buffered data.

### 4.3.7 Network disconnection and reconnection

In client mode, after the device is disconnected from the network, it will try to actively connect to the server at the specified time. If the request times out and the set number of reconnections has not been successfully reconnected, the device will restart to prevent the device from disconnecting from the network. Unable to restore connection.

Disconnection and reconnection time: The time interval between each attempt of the device to re-establish the network.

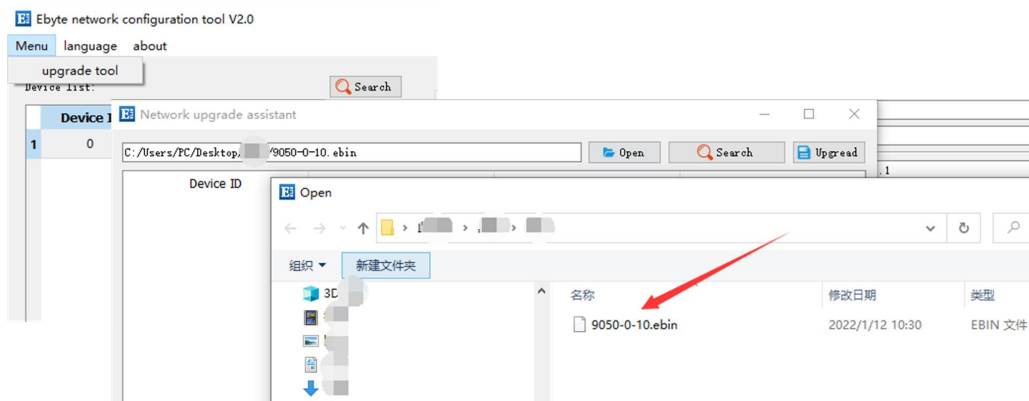
Number of reconnections: The number of times the device tries to re-establish the network, and the cumulative number of requests reaches the preset value. If the connection is not successful, the device will automatically restart. The actual restart time is the network disconnection reconnection period multiplied by the number of reconnections. It is recommended to use the factory default parameters without special requirements.

### 4.3.8 Remote upgrade

In order to facilitate later maintenance and upgrade functions and to replace different firmware, the serial server (NA11x series, NB114, NS1, NT1, etc.) supports online upgrade, and users can upgrade or replace the current firmware through the upgrade firmware provided by our company through the host computer.

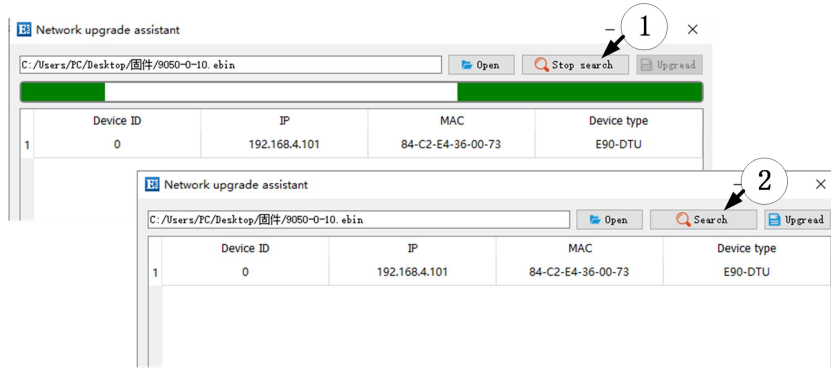
Network upgrade firmware operation steps:

Step 1: Open the host computer, open the device upgrade assistant in the menu bar, and select the required firmware (The official website only provides the latest firmware, please refer to "Firmware Instructions" for details);

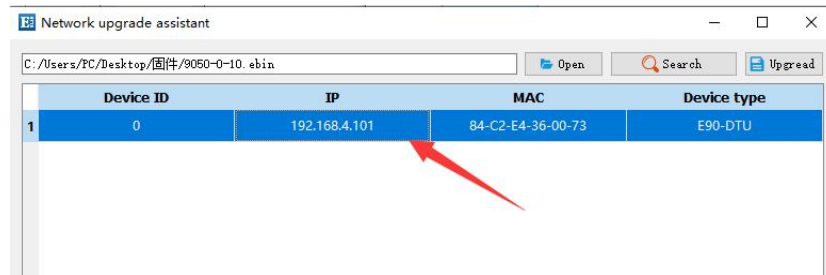


Step 2: Click to search for devices, and click to stop searching after finding the device;



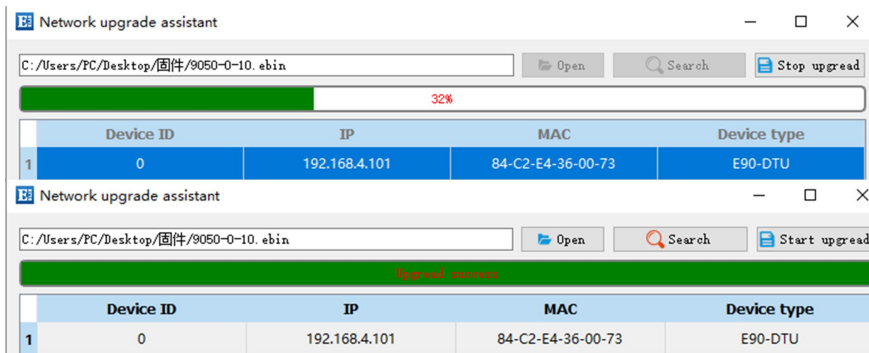


Step 3: Select the corresponding device that needs to be upgraded;



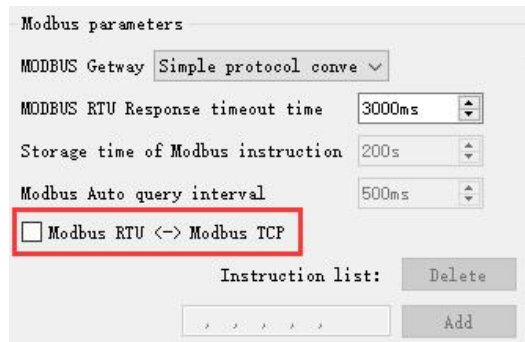
Step 4: Click to start the upgrade, the device indicator flashes, and wait for the upgrade to complete.

[Note] When the device is just powered on, click "Search Device" in the upgrade assistant, the device will enter the firmware burning state, and it will return to normal mode after power off and restart.



## 4.4 Modbus Gateway

### 4.4.1 Modbus RTU and Modbus TCP protocol conversion



Enable(Check): Convert Modbus RTU protocol to Modbus TCP protocol.

Disabled: Do not perform Modbus conversion but verify Modbus data, discard non-Modbus data (RTU/TCP) and not transmit.

### 4.4.2 Simple Protocol Conversion Mode

Convert Modbus RTU data to Modbus TCP data, or convert Modbus TCP data to Modbus RTU data, to realize the mutual conversion of Ethernet Modbus data and serial port Modbus data.

Simple protocol conversion can work in any mode (TCP client, TCP server, UDP client, UDP server etc.), no matter what mode it is working in, there can only be one Modbus master station.

Simple protocol conversion configuration (TCP server mode as an example, the upper computer on the left, web page on the right) :

DHCP	disable	Work mode	TCP server	MAC	84-C2-E4-36-07-B7
Local IP	192.168.4.164	Local port	0	Web port	80
MASK	255.255.255.0	Gateway	192.168.4.1	DNS	192.168.4.1
Target IP	192.168.3.100	Target port	5000		

MODBUS TCP to RTU	Open	Mosbus instructions			
Modbus mode	Simple	MODBUS Query time	500	spare space	#9
Modbus timeout	1000	MODBUS keep time	10	01 03 00 00 00 0A	X

### 4.4.3 Multi-host mode

There is only one Modbus master station for relatively simple protocol conversion, while the multi-master mode can handle up to 6 Modbus TCP masters. One request is processed at a time, while the multi-host mode will be sequenced according to the TCP request, and other links will wait) to solve the bus conflict problem (currently only 6 host connections are supported), only supports working in TCP server mode, slave machine Only in the serial port, otherwise it will not work properly.

It is recommended to configure "Simple Protocol Conversion" when no multi-channel host is used.

Multi-host mode configuration (upper computer, web page below) :

DHCP	disable	Work mode	TCP server	MAC	84-C2-E4-36-00-73
Local IP	192.168.4.101	Local port	8886	Web port	80
MASK	255.255.255.0	Gateway	192.168.4.1	DNS	192.168.4.1
Target IP	192.168.4.100	Target port	8887		

MODBUS TCP to RTU	Open			
Modbus mode	Multi host			
Modbus timeout	3000			

### 4.4.4 Storage Gateway

The storage gateway not only arbitrates the bus data but also stores the repeated read commands. When different hosts request the same data, the gateway does not need to query the register status of the RTU device multiple times, but directly returns the data cached in the storage area. To a certain extent, the multi-host request processing capability of the gateway is improved, and the time consumed by the entire request process is also shortened. Users can customize the storage area command polling interval and command storage time according to their needs.

As the optimization of multi-host request performance, the storage gateway can only work in the TCP server mode, which improves the response speed of the network side.

Features:

- (1) The gateway has a 5K cache for storing instructions and returning results (reading 10 holding registers as an example, it can store 189 instructions and return results);
- (2) The RTU response time-out automatically clears the cache to ensure the real-time and authenticity of the data;
- (3) The polling interval can be customized, 0-65535ms;
- (4) The gateway will poll the RTU device according to the storage time of the instruction used for configuration. If the MODBUS host does not query the instruction again during the storage time, the gateway will automatically delete the storage instruction to release the cache;
- (5) The first command and control command (05, 06, 0F, 10 function codes) will directly access the RTU device;
- (6) Only 01, 02, 03, 04 Modbus function code query result storage is supported;

Storage gateway configuration (upper computer, web page) :

The screenshot displays two configuration panels. The left panel, titled 'Network parameters', includes fields for Device name (E0001), Serial Number (00001), DHCP (Disable), Local port (8886), Local IP (192.168.4.101), Mask (255.255.255.0), Getway (192.168.4.1), Remote IP (192.168.4.100), DNS (192.168.4.1), Web server port (80), Network mode (TCP server), and Remote port (8887). Below this is a summary table for network parameters.

Network parameter		
DHCP	disable	Work mode
Local IP	192.168.4.101	Local port
MASK	255.255.255.0	Getway
Target IP	192.168.4.100	Target port
		MAC
		Web port
		DNS
		Target port

The right panel, titled 'Modbus parameters', shows MODBUS Getway (Storable getway), MODBUS RTU Response timeout time (3000ms), Storage time of Modbus instruction (200s), Modbus Auto query interval (500ms), and a checked checkbox for 'Modbus RTU (->) Modbus TCP'. Below this is a summary table for Modbus parameters.

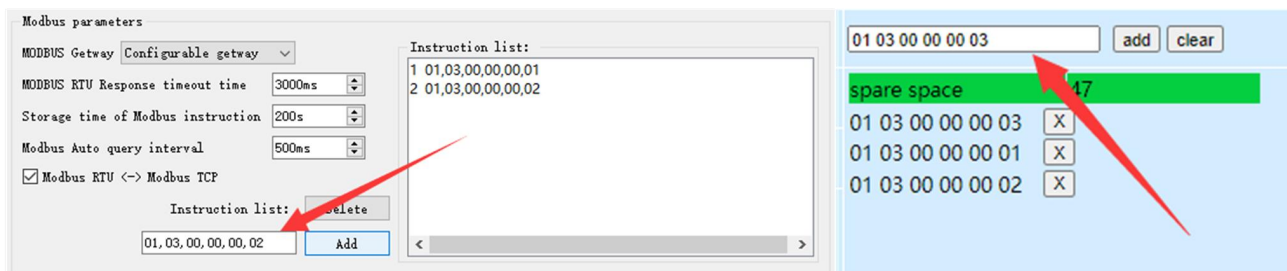
MODBUS parameter	
MODBUS TCP to RTU	Open
Modbus mode	Storable
Modbus timeout	3000
Mosbus instructions	MODBUS 500
	Query time Range:0-65535ms
	Modbus 200
	keep time Range:0-255s

### 4.4.5 Configurable Gateway

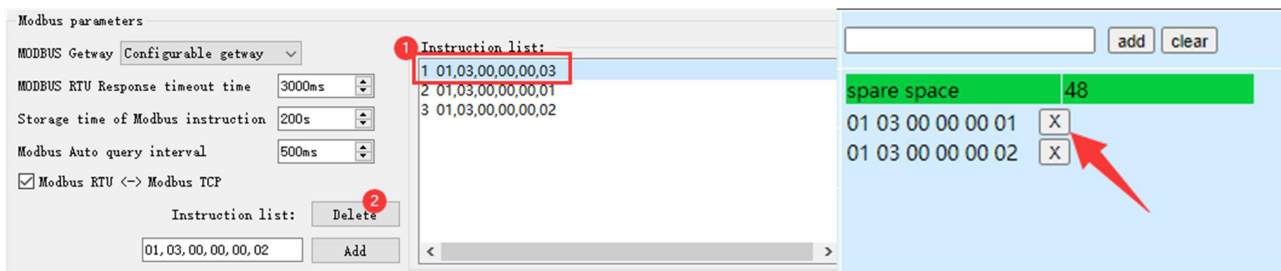
The gateway automatically polls the RTU device registers according to the pre-configured MODBUS commands (only supports the configuration of the MODBUS read command), and the commands in the non-storage table will directly operate the RTU device. Frequently read commands can be stored in the gateway in advance, which can shorten the response time (query configured commands). Due to the above features, the serial port side of the configurable gateway can only be connected to Modbus slaves.

Add instruction, left for the upper computer, right for the web page

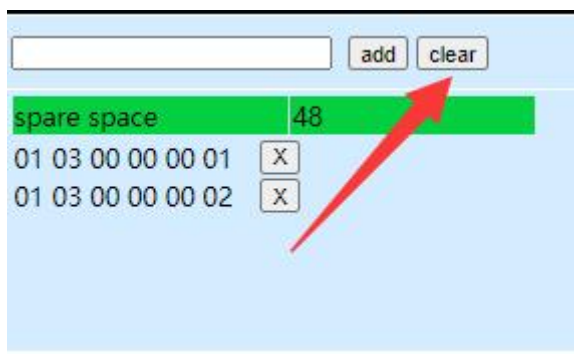
Instruction storage description (Add instruction, Left picture software right picture web page):



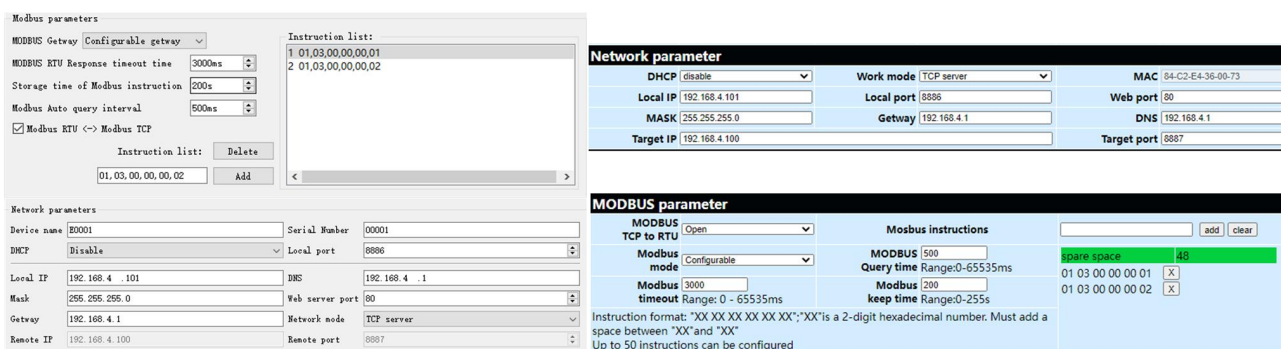
Instruction storage description (Delete, Left picture software right picture web page):



Clear instructions:



Configurable gateway configuration (Left picture software right picture web page) :



#### 4.4.6 Automatic upload

In client mode (TCP client, UDP client etc.), the gateway will automatically poll the instructions in the stored instruction table and upload it to the server, and the feedback format (Modbus RTU format or Modbus TCP format) can be selected according to the requirements. ) and the command polling interval (0-65535ms).

For instruction pre-storage, refer to "Configurable Gateway - Instruction Storage Instructions", and automatically upload the upper computer/web page configuration:

**Network parameters**

Device name: E0001 Serial Number: 00001

DHCP: Disable Local port: 0

Local IP: 192.168.4.101 DNS: 192.168.4.1

Mask: 255.255.255.0 Web server port: 80

Gateway: 192.168.4.1 Network mode: TCP client

Remote IP: 192.168.4.100 Remote port: 8887

**Modbus parameters**

MODBUS Gateway: AutoUpdate

MODBUS RTU Response timeout time: 3000ms

Storage time of Modbus instruction: 200s

Modbus Auto query interval: 500ms

Modbus RTU (->) Modbus TCP

Instruction list:

```
1 01,03,00,00,00,01
2 01,03,00,00,00,02
```

Instruction list: Delete Add

**Network parameter**

DHCP	disable	Work mode	TCP client	MAC	84-C2-E4-36-00-73
Local IP	192.168.4.101	Local port	0	Web port	80
MASK	255.255.255.0	Gateway	192.168.4.1	DNS	192.168.4.1
Target IP	192.168.4.100	Target port	8887		

**MODBUS parameter**

MODBUS TCP to RTU: Close

Modbus mode: Auto update

MODBUS 500

Query time Range: 0-65535ms

Modbus timeout Range: 0 - 65535ms

Modbus 3000

keep time Range: 0-255s

Modbus 200

MODBUS instructions: spare space 46

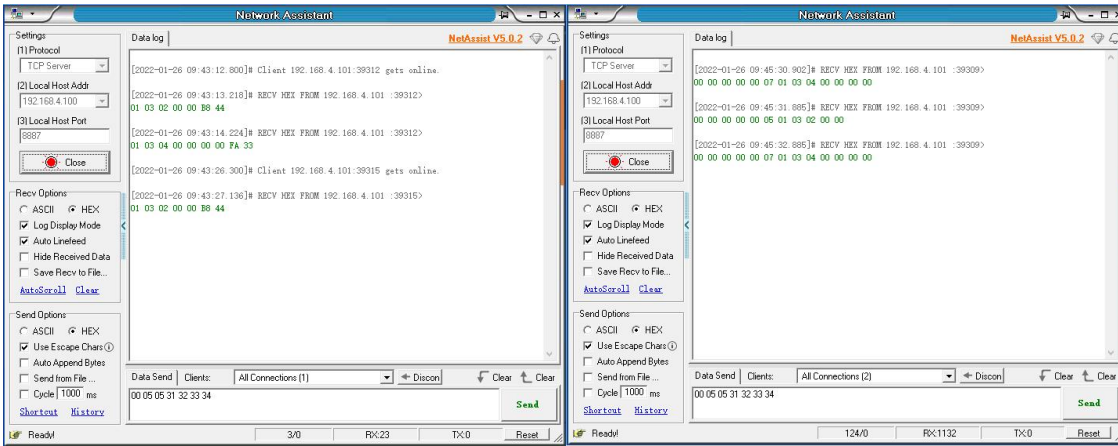
01 03 00 00 00 01 X

01 03 00 00 00 02 X

Instruction format: "XX XX XX XX XX XX"; "XX" is a 2-digit hexadecimal number. Must add a space between "XX" and "XX"

Up to 50 instructions can be configured

TCP client demo (Modbus RTU format on the left and Modbus TCP format on the right):



## 5. Configuration Mode

### 5.1 Web Settings

You can customize the relevant parameters through the Web setting method. Open the browser, enter the device IP in the address bar (default: 192.168.3.7), enter the page, you can query and set parameters, and finally click the "Submit" menu to wait for the page to return to the successful prompt, and it will take effect.

Note: Do not enter the web page configuration during normal use, which may cause data loss. If you enter the web page configuration, you need to restart to enter the communication mode.

Web page configuration initialization password: 123456, can be customized configuration, only supports 6-bit uppercase and lowercase letters and numerical configuration.

The webpage configuration requires browsers with newer kernels to work properly, such as Microsoft Edge (96.0.1054.62), Google chrome (96.0.4664.110), Firefox (95.0.2), etc.

[Note] IE, 360 compatibility mode, QQ browser compatibility mode and other browsers using IE core are not supported to use web page configuration.

### 5.2 Configuration tool software settings

Open the configuration tool software, search for devices, double-click the identified device, and the parameter query configuration interface will pop up. You can customize and modify relevant parameters according to your needs, then save the configuration, restart the device, and complete the parameter modification.

**【Note】 :**

Do not use multiple host computers in the same local area network environment. Multi-network card industrial computers need to temporarily disable and do not use network cards, otherwise the host computer will not be able to search for devices normally (the same device is displayed multiple times, no device can be found, etc.)

The host computer shields the wireless network card, so the network cable must be connected to use the host computer, and the wireless network card can be configured through the web page.

### 5.3 AT command configuration

The query and modification of relevant parameters of the device can be completed through AT command configuration. For specific AT commands, please refer to "NA11x&NT&NS-AT Command Set".

The final interpretation right belongs to Chengdu Ebyte Electronic Technology Co., Ltd.

## Revise history

Version	Date	Notes	Reviser
1.0	2022-06-01	Initial version	Xxn
1.1	2022-09-20	Content updates	Xxn
1.2	2022-11-22	Revision of Manual Content	Xxn
1.3	2023-3-31	Revision of Manual Content	LT
1.4	2023-4-14	Add information about external recommended circuits	LT
1.5	2023-10-18	Added IO port description	LY

## About us

Technical support: [support@cdebyte.com](mailto:support@cdebyte.com)

Documents and RF Setting download link: <https://www.cdebyte.com>

Thank you for using Ebyte products! Please contact us with any questions or suggestions: [info@cdebyte.com](mailto:info@cdebyte.com)

Phone: +86 028-61399028

Web: <https://www.cdebyte.com>

Address: B5 Mould Park, 199# Xiqu Ave, High-tech District, Sichuan, China

 **Chengdu Ebyte Electronic Technology Co.,Ltd.**